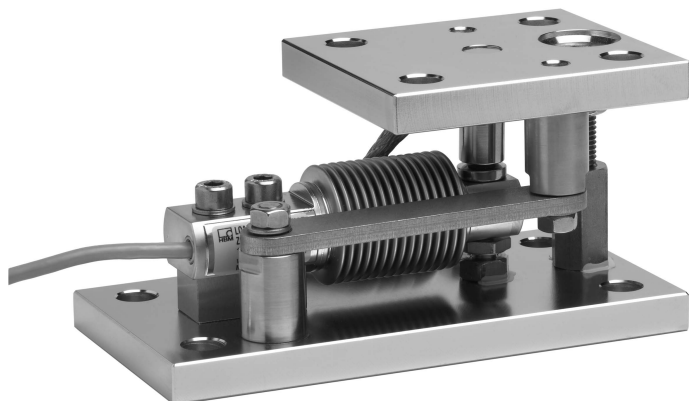


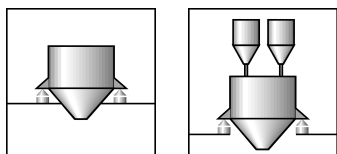
Z6B/ML...

Weighing module for
50 kg...500 kg

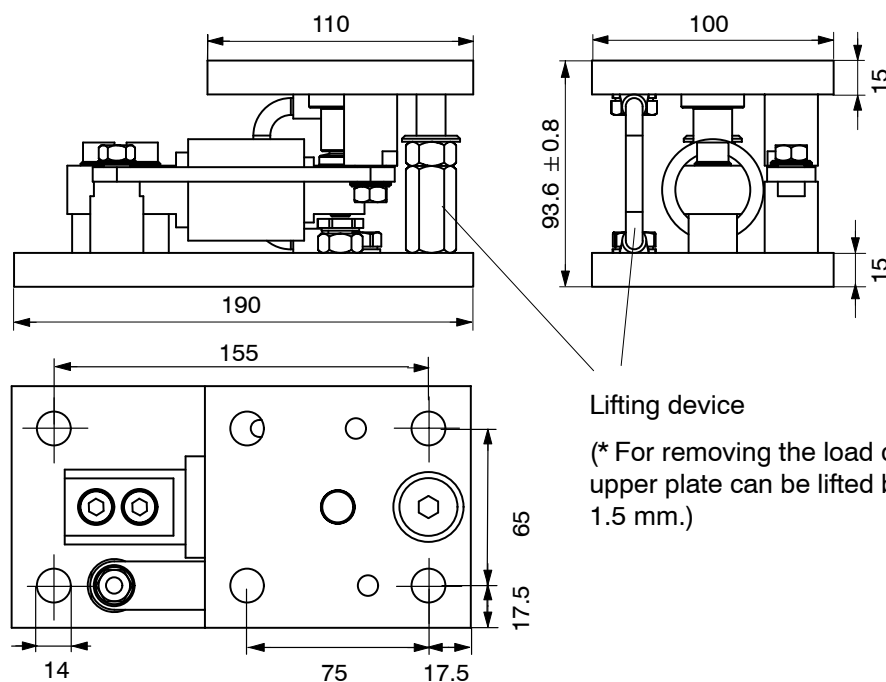


Special features

- Equipped with load cell Z6F...class D1 according to OIML R60
- With overload stop and Transverse stay rod
- Maintenance-free
- Compact installation at minimum height
- Easy installation
- Two versions available:
 - Galvanized material or
 - Stainless steel
- Self-restoring due to pendle bearing
- With lift-off device and lifting device



Dimensions (in mm, 1 mm = 0.03937 inches)



Specifications of the weighing module Z6B/ML(R)/...:

Maximum capacity		50 kg	100 kg	200 kg	500 kg
Limit load	% of Max. capacity	150			
Breaking load	% of Max. capacity	200			
Restoring force (at 1 mm side offset)	% of applied load	6.1			
Max. side offset transverse to the stay rod axis*	mm	± 1.5			
Max. static horizontal force in the stay rod direction	kN	5			
Max. lift-off force	kN	5			
Material		Galvanized or Stainless steel			
Weight (depending on the version, incl. load cell)	kg	8...9			
Adjustment range of the overload stop	mm	≤0.35	≤0.25	≤0.45	≤0.8

* when horizontal adjustment the upper module plate

For specifications and additional information on the appropriate load cells, please refer to the Data sheet Z6F...

Survey of ordering codes:

Maximum capacity	Galvanized Material	Stainless Steel
50 kg	1-Z6B/ML50KG	1-Z6B/MLR50KG
100 kg	1-Z6B/ML100KG	1-Z6B/MLR100KG
200 kg	1-Z6B/ML200KG	1-Z6B/MLR200KG
500 kg	1-Z6B/ML500KG	1-Z6B/MLR500KG

Scope of delivery:

Weighing module with load cell Z6FD1/... (Standard) or Z6FC3/... (Option), complete mounted with transverse stay rod, pendle support and ground wire.

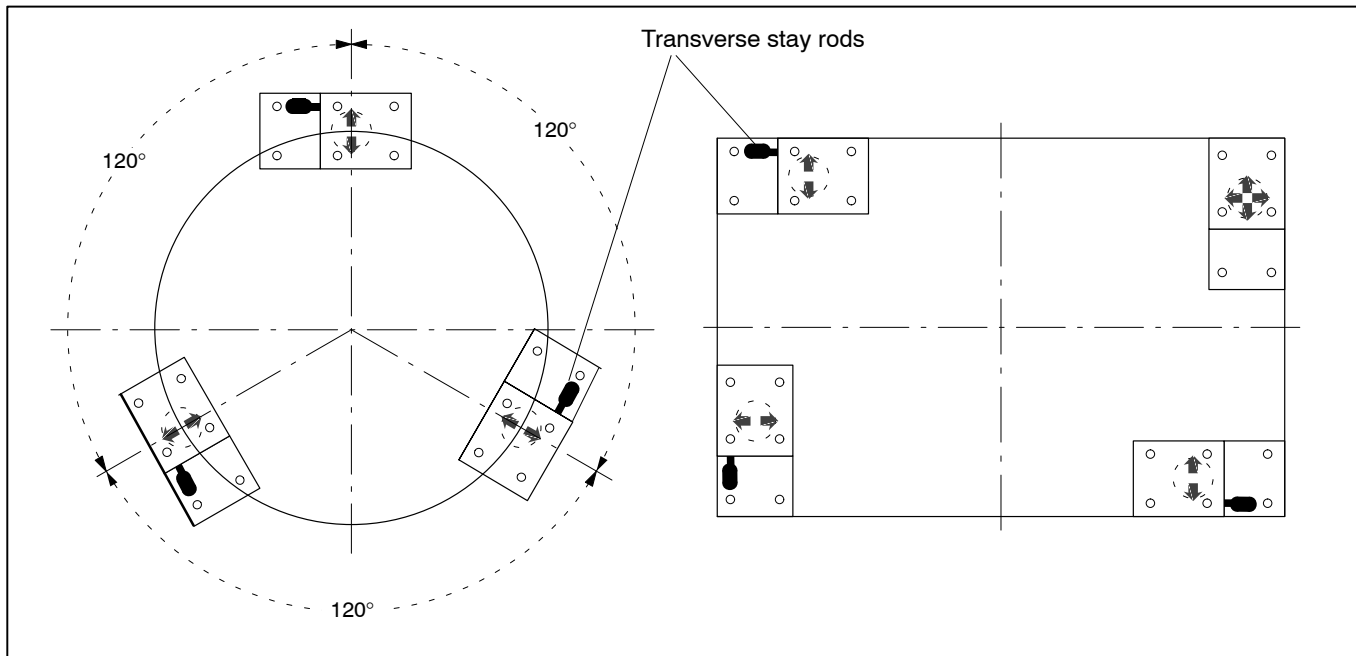
Options:

Optionally with load cells in Class C3 to OIML R60

Ex-Version according to ATEX 95:

- II 2 G EEx ia IIC T4 or T6 (Zone 1)
- II 3 G EEx nA II T6 (Zone 2)
- II 3 D IP68 (Zone 22 for non conductive dust)
- II 2 D IP67 T 80 °C (Zone 21)

Mounting example for weighing modules with transverse stay rods:



Attention: The represented bearing arrangements consider only weighing-technical criteria. The carrying and stability must be examined and guaranteed in each case by the operator.

Modifications reserved.
All details describe our products in general form only. They are not to be understood as express warranty and do not constitute any liability whatsoever.

Hottinger Baldwin Messtechnik GmbH

Im Tiefen See 45, D-64293 Darmstadt, Germany
Tel.: +49 6151 8030; Fax: +49 6151 803 9100
E-mail: support@hbm.com www.hbm.com



measurement with confidence